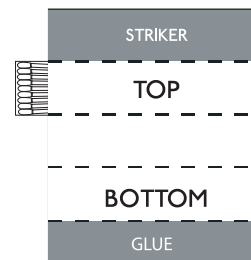
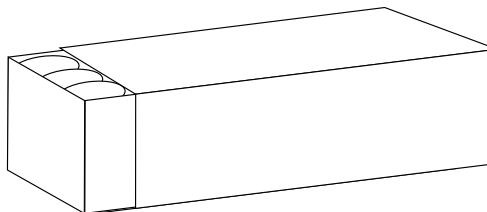


Matchbox Style 1010 IN

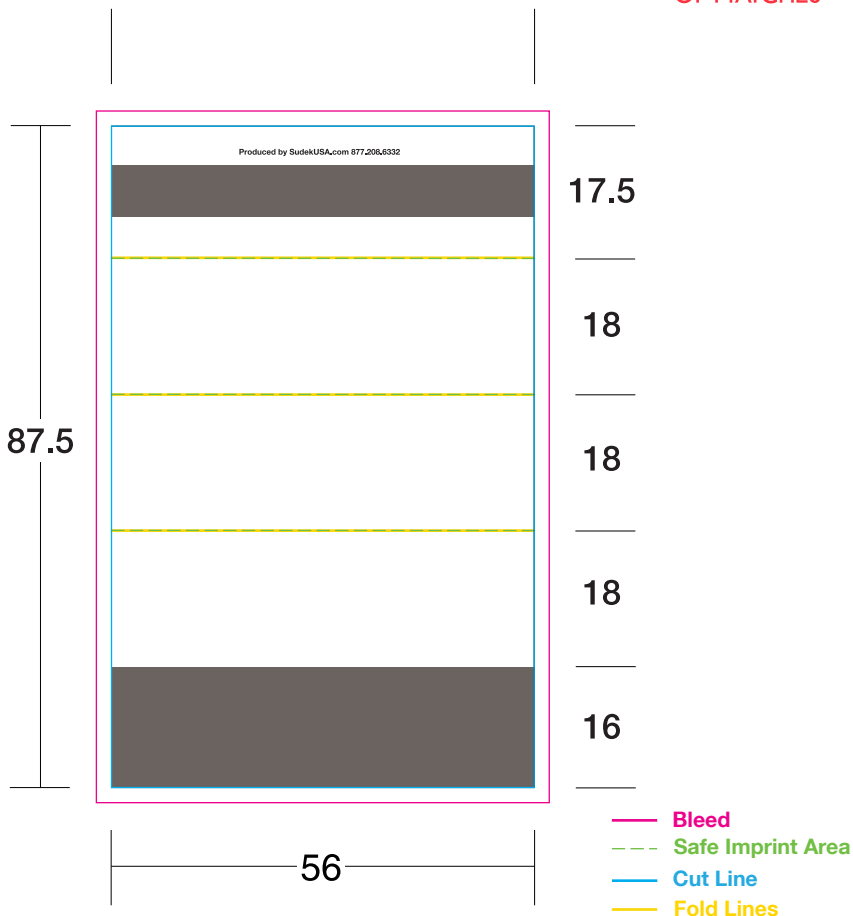
All measurements are in millimeters

Possible movement of 1 to 2 mm (3/64" to 5/64"), in any direction, during the cutting process.



ORIENTATION OF MATCHES

Approximate stock match tip colors



IMPORTANT NOTICE:

The colors appearing on this PDF proof are not color-calibrated but represent the colors to be used on press. If there is anything wrong with these colors, do not approve this proof. Please check and double-check this proof: all colors, graphics, copy, punctuation, and spelling. It is only to be approved if all elements of your job are absolutely correct. Final correctness is your sole responsibility. Once you have approved this proof Sudek USA Inc. will not be responsible for any omissions, oversights, or errors.

DATE:	
SIGNATURE:	
PRINT NAME:	
POSITION:	

Please specify Pantone colors below

<input type="text"/>	PMS	<input type="text"/>	PMS	<input type="text"/>	CMYK
<input type="text"/>	PMS	<input type="text"/>	PMS		

List Matchtip color below

Matchbox Finish

- ☐ 1. Glossy (Coated) - PMS C colors
- ☐ 2. Glossy with Matte Varnish (additional charge) - PMS C colors

Purchase 3 or more different logo products at the same time and receive a 5% discount, order 5 or more products and receive a 10% discount.